

G-FIVE

Digital Imaging Solutions



Sharpdesk

DIGITAL IMAGING SOLUTIONS

A Tutorial on Sharpdesk



© G-FIVE, INC.
297 Garlington Rd • Suite H
Greenville, SC 29617
Phone 864.675.5755 • Fax 864.675.6555



Table of Contents

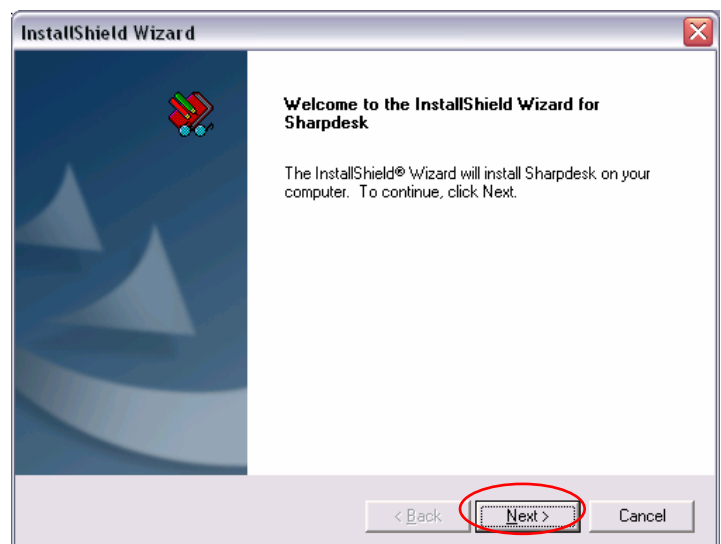
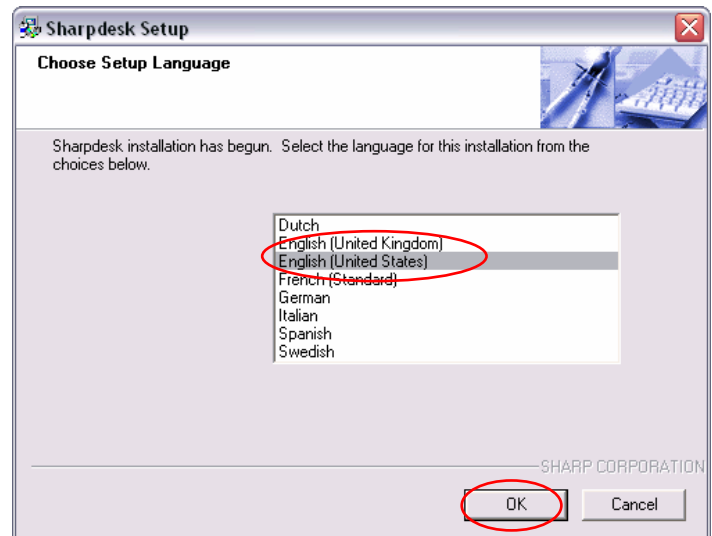
Installing Sharpdesk	1
Configuring Sharpdesk.....	7

Installing Sharpdesk

1. Insert the SharpDesk CD into the CD-ROM drive.
 - The System should AutoStart the install program. If it does not start automatically, open *My Computer* and double click the CD-ROM that the SharpDesk CD is in.
 - The system should then start the installation program

2. Select **English (United States)**

3. Click **OK**



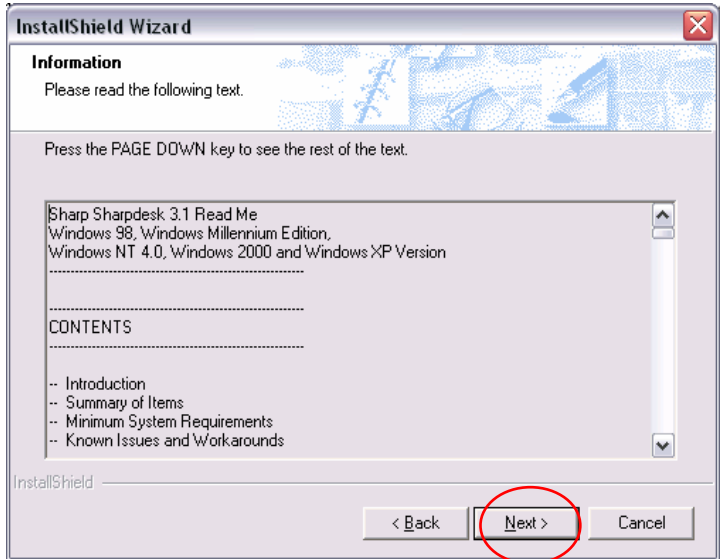
The system will configure the windows installer and start the InstallShield Wizard.

4. Click **Next**



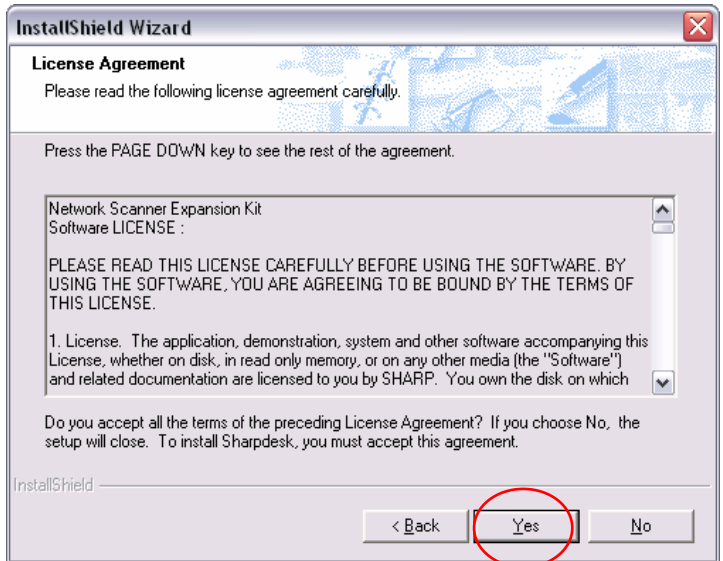
The wizard displays the InstallShield Information and Read Me file.

5. Click Next



The wizard displays the License Agreement

6. Click Yes

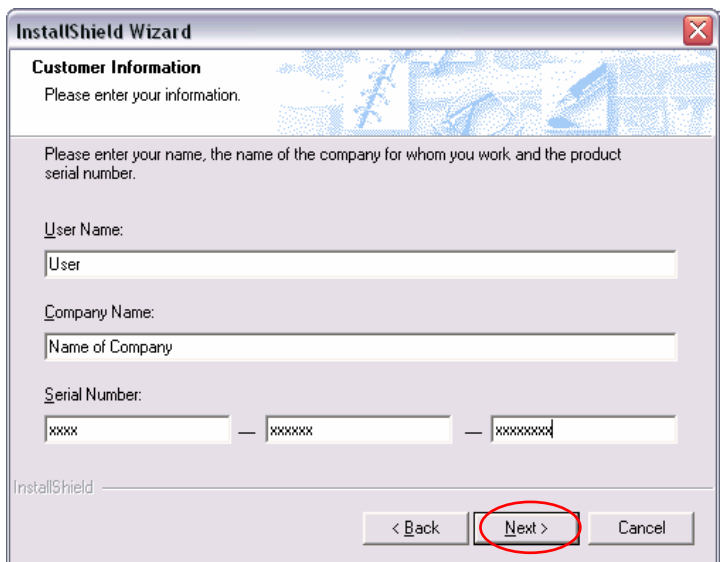


The wizard displays the Customer Information page.

7. Type in your User Name, Company and Serial Number

Note: the serial number is on the Sharp install book.

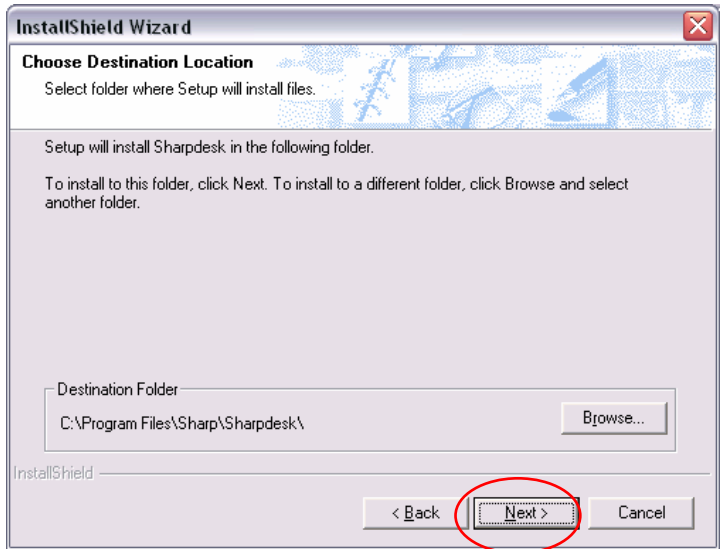
8. Click Next





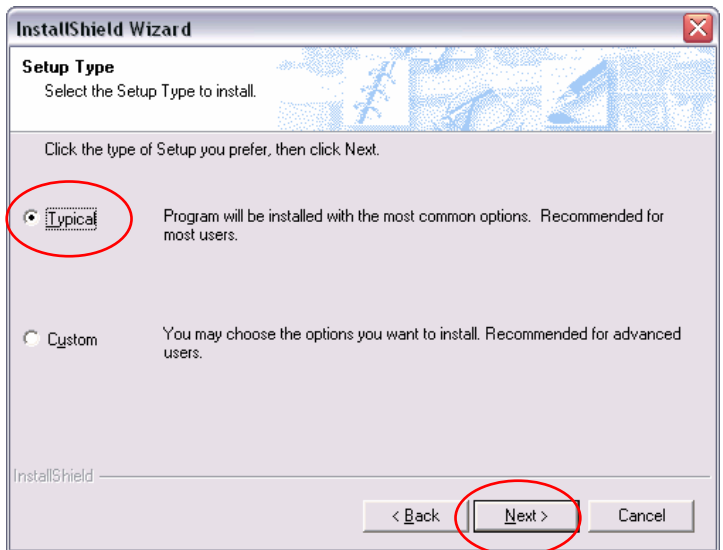
The wizard displays the Destination Location for the installation (the default folder should be fine)
-C:\Program Files\Sharp\SharpDesk\

9. Click Next



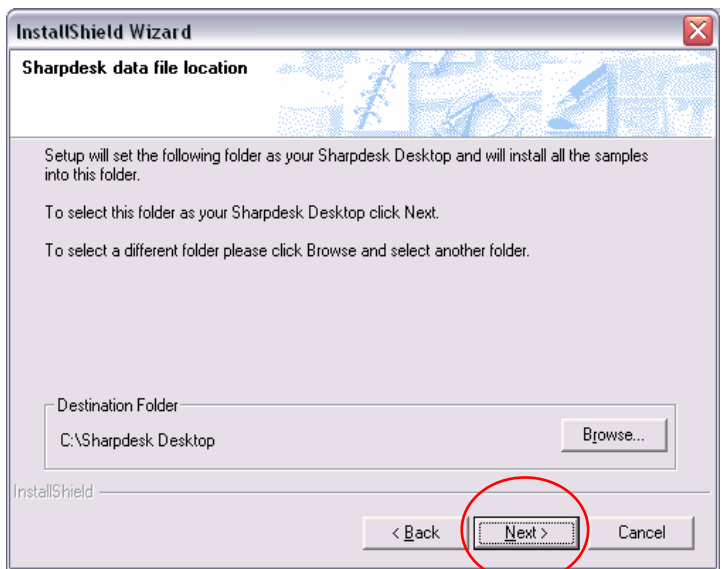
The wizard Asks for the Setup type.

10. Make sure Typical is selected and click Next



Wizard displays SharpDesk data destination folder (the default folder should be fine)
C:\Sharpdesk Desktop

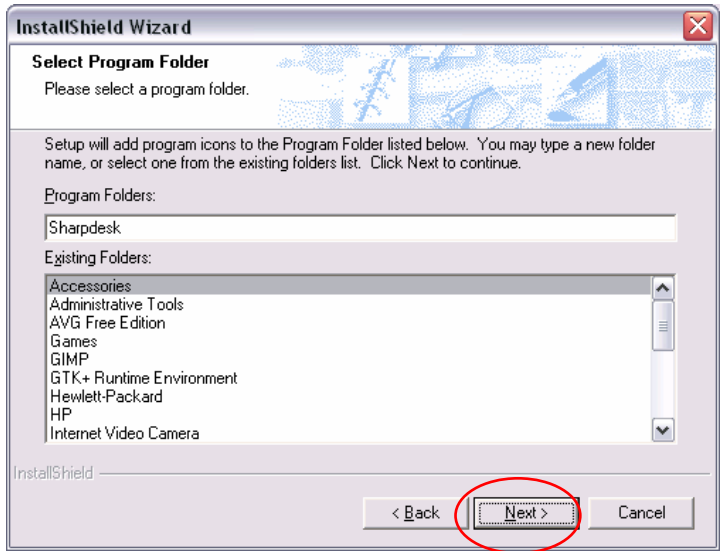
11. Click Next



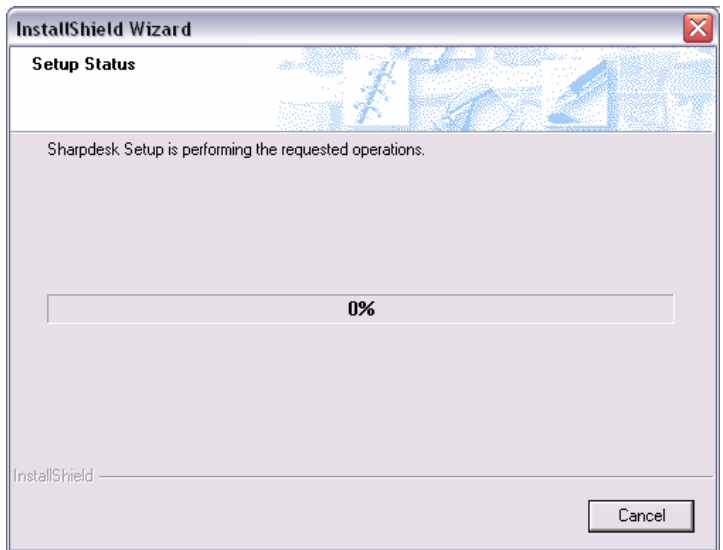


Wizard displays Select Program Folder

12. Click Next

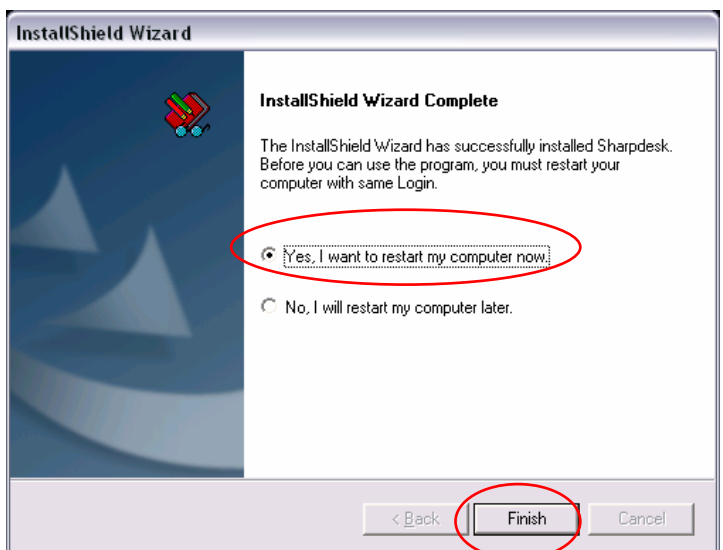


Wizard installs Sharpdesk (this may take several minutes)



Wizard displays InstallShield Wizard Complete

13. Select Yes, I want to restart my computer, click Finish.

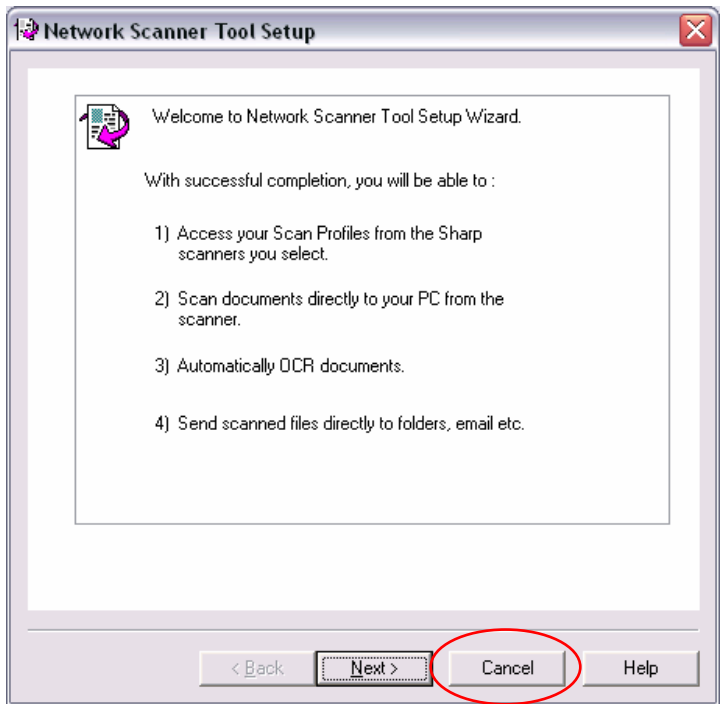


System restarts itself

14. Login to windows

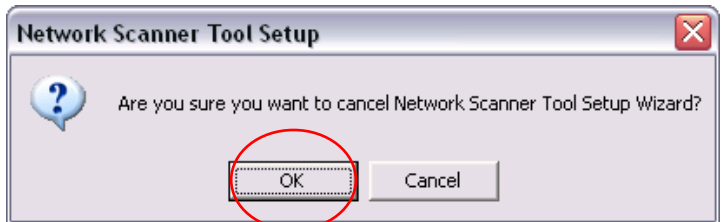
Network Scanner tool setup wizard launches

15. Click Cancel



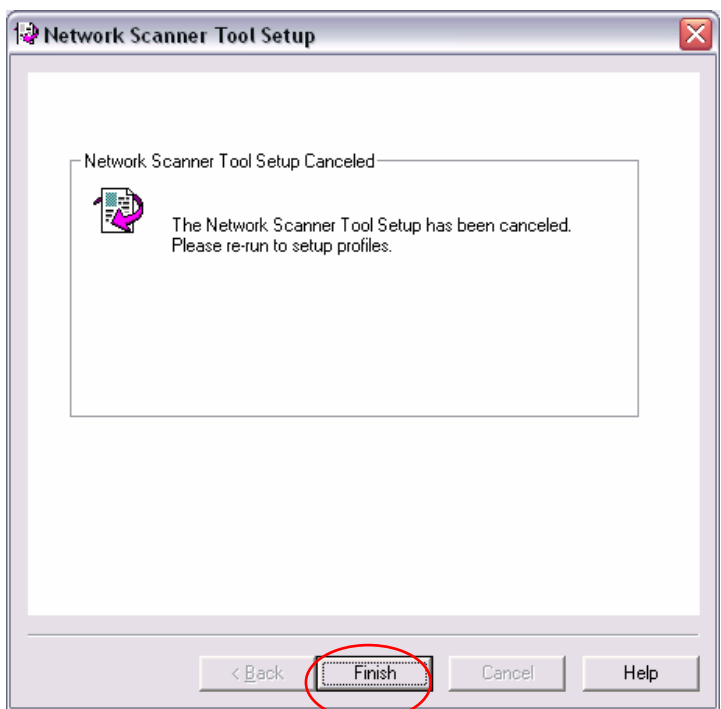
Wizard then asks if you are sure you want to cancel the Network Scanner Tool setup wizard

16. Click OK



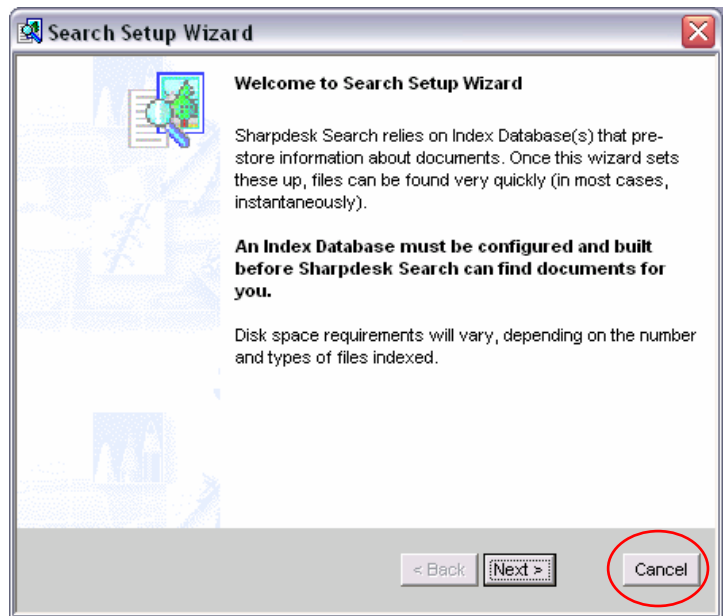
Wizard shows that the Network Scanner Tool Setup has been canceled

17. Click Finish



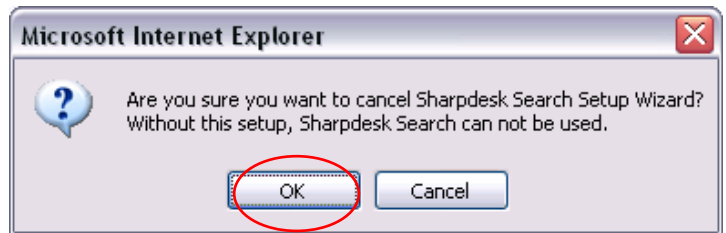
System displays Search Setup Wizard

18. Click Cancel



Wizard then asks if you are sure you want to cancel Sharp Search Setup Wizard

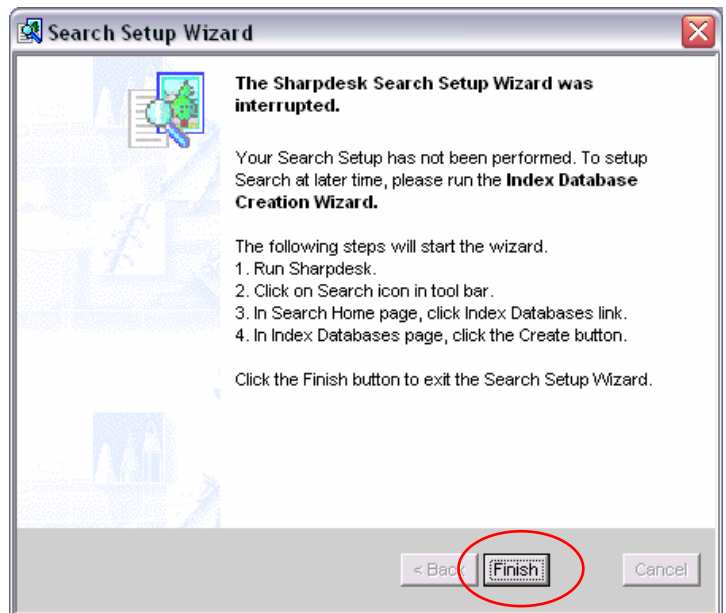
19. Click OK



System displays dialog box informing you Sharp Search Setup Wizard was interrupted

20. Click Finish

System finishes starting up

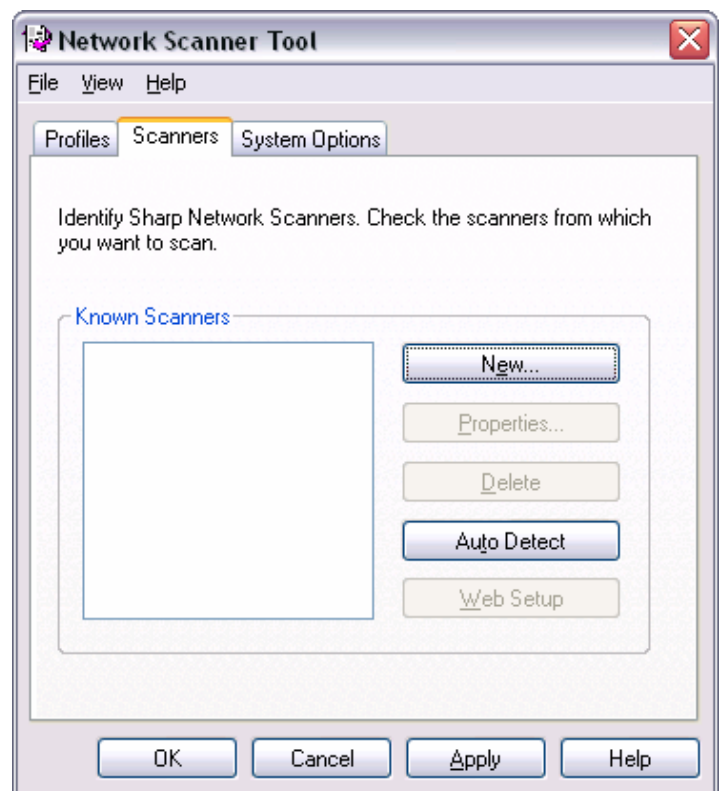


Configuring Sharpdesk

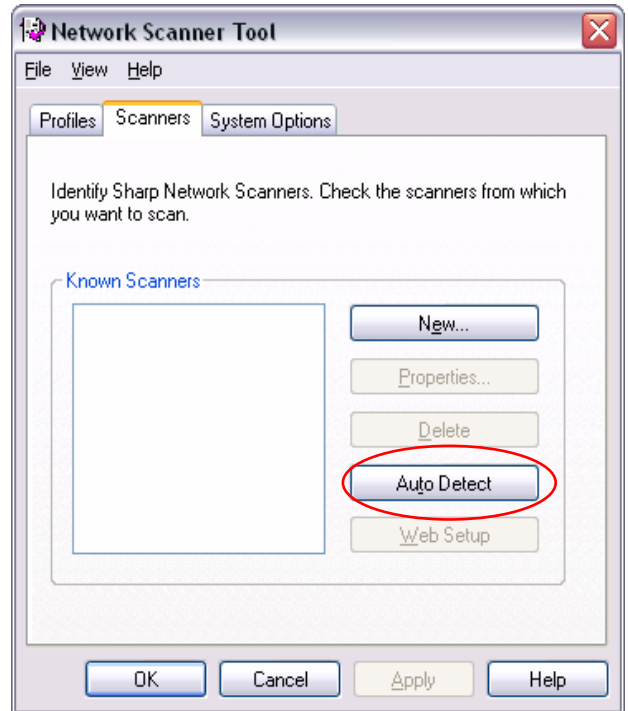
1. Click *Start Menu*, then *Programs*, then *SharpDesk*, then *Network Scanner Tool*

System displays Network Scanner Tool dialog box

2. Click the **Scanners** tab



3. Click AutoDetect

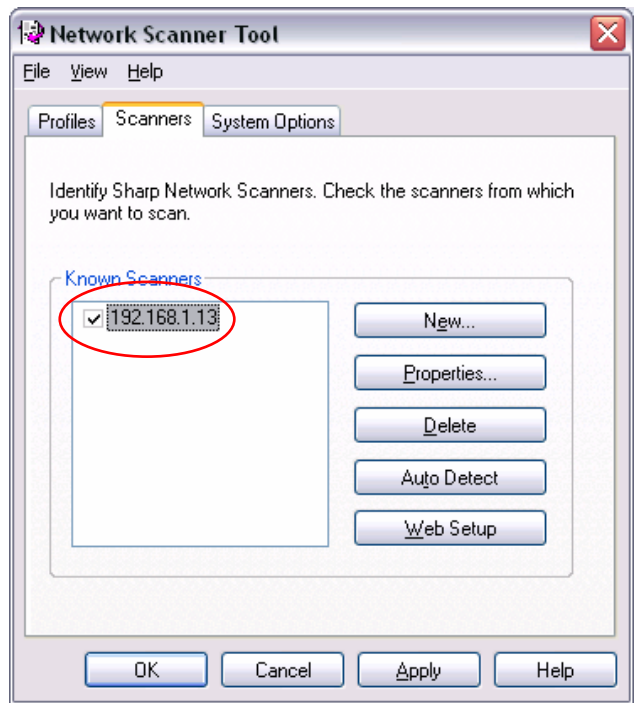


System searches for all available scanners on your network

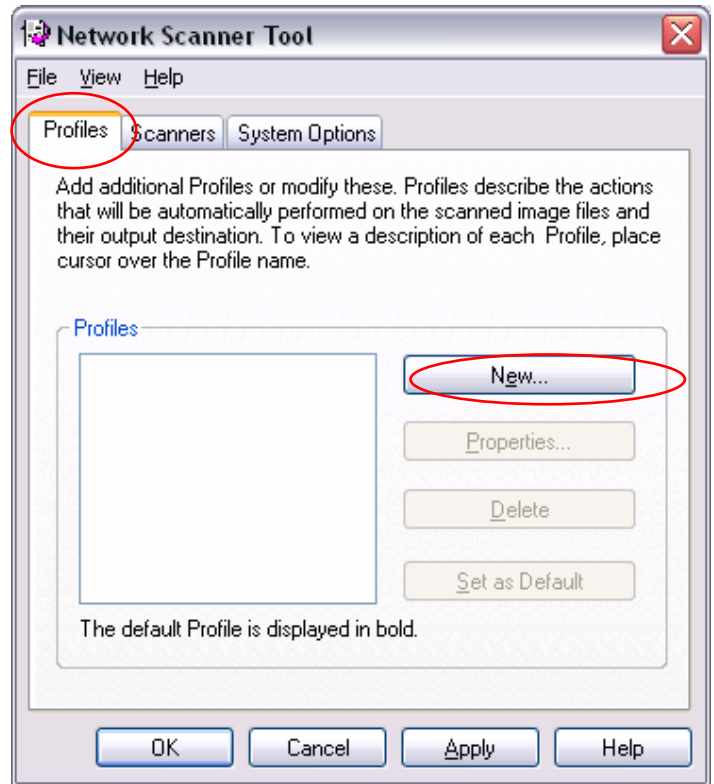


4. Check the Checkbox next the scanner.

Note: System might display a dialog box that says 'This scanner supports custom FTP log, which is more secure. If so, Click OK; Otherwise continue to step 5

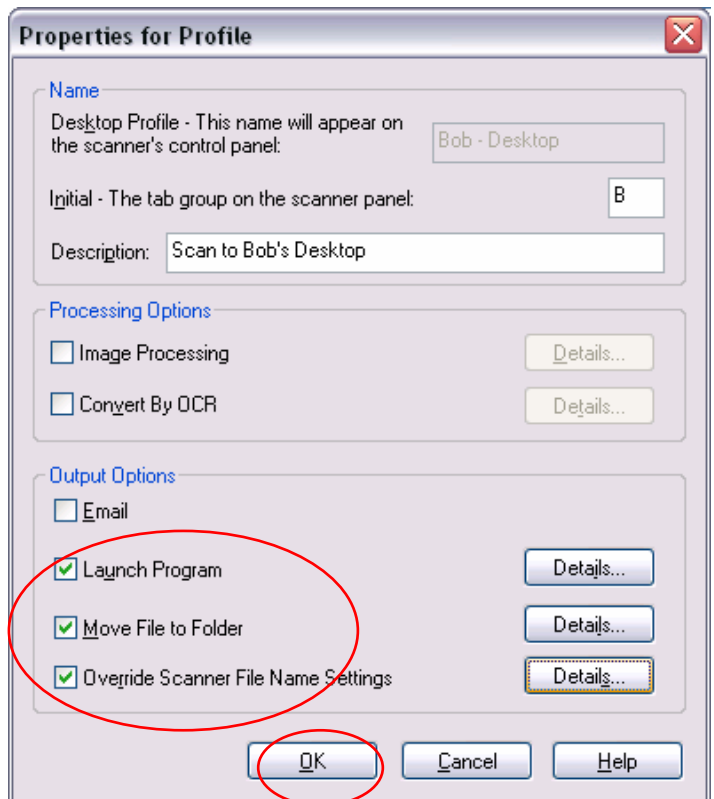


5. Click the **Profiles** tab
6. Click **New...**



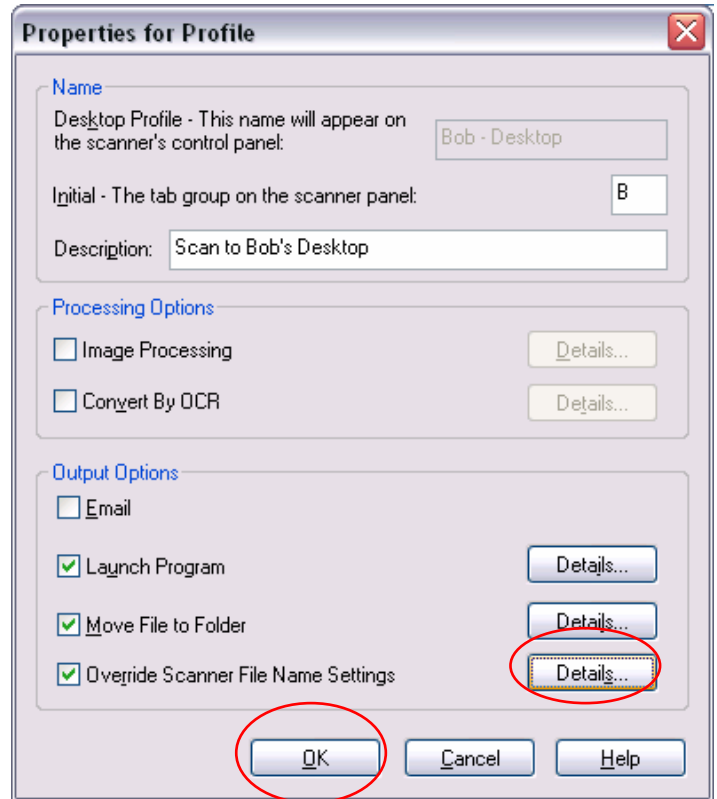
System displays profile properties box

7. **Type in the Desktop profile name**
 - a. i.e Bob – Desktop
8. **Type in the 1st initial of the User**
9. **Type a description of the new profile**
 - b. i.e. Scan to Bob's Desktop
10. Under output options, make sure the following are checked
 - c. **Move File to Folder**
 - d. **Launch Program**
 - e. **Override Scanner File Name Settings (Optional-see next page)**
11. Under output options, make sure the following is NOT checked
 - f. **Email**



If Override Scanner File Name Settings was checked, follow these instructions to configure that option; **otherwise Click OK and skip to step 15**

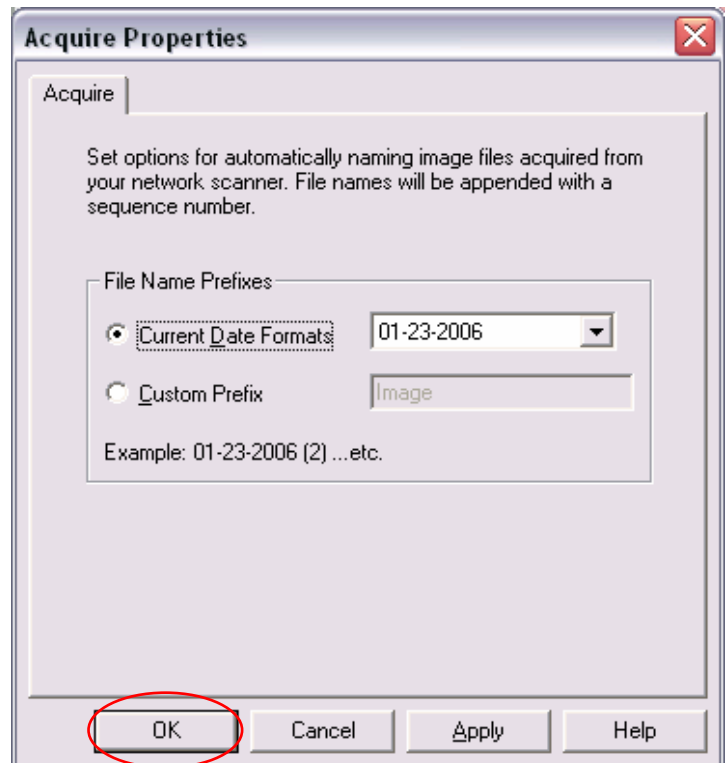
12. Click Details...



This option overrides the default naming scheme for the scanned images. It can be set to name the files by the date or a specified custom prefix.

After the desired naming scheme is selected,

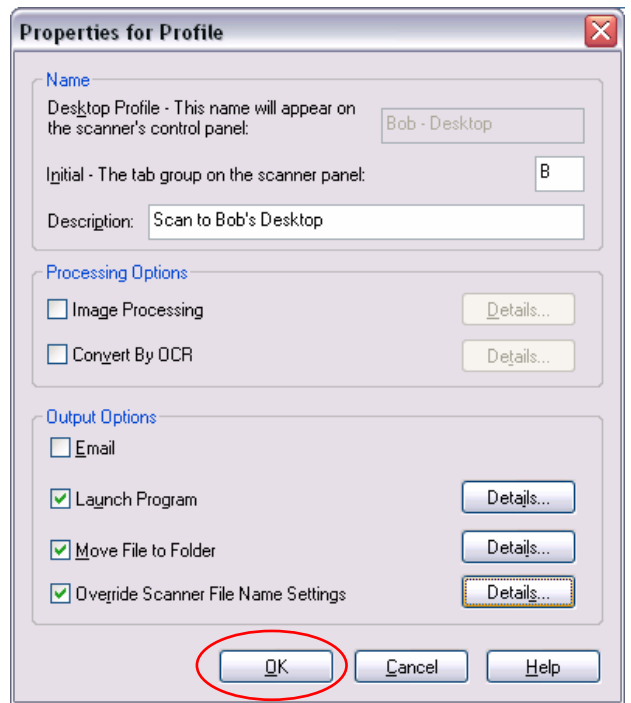
13. Click OK





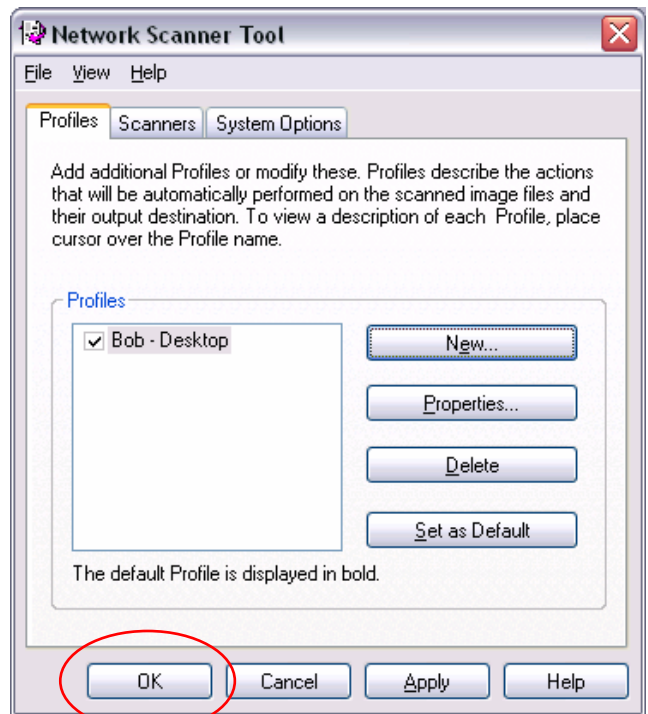
System returns to the Profile Properties page.

14. Click **OK**



System returns to Network Scanner Tool dialog box

15. Click **OK**



System saves profile to scanner

16. Click **Close** on the save dialog box

Setup is Complete

